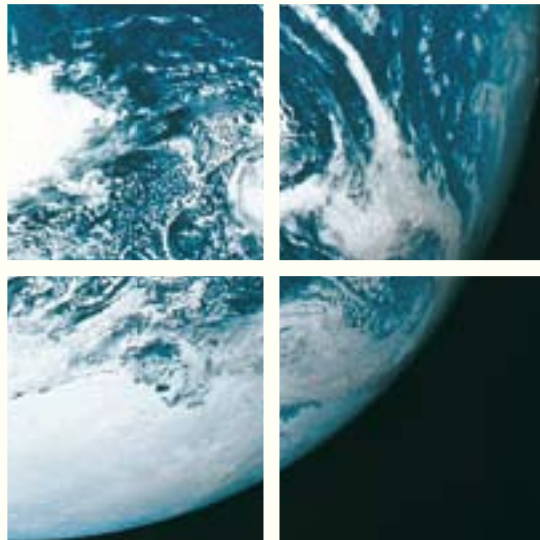
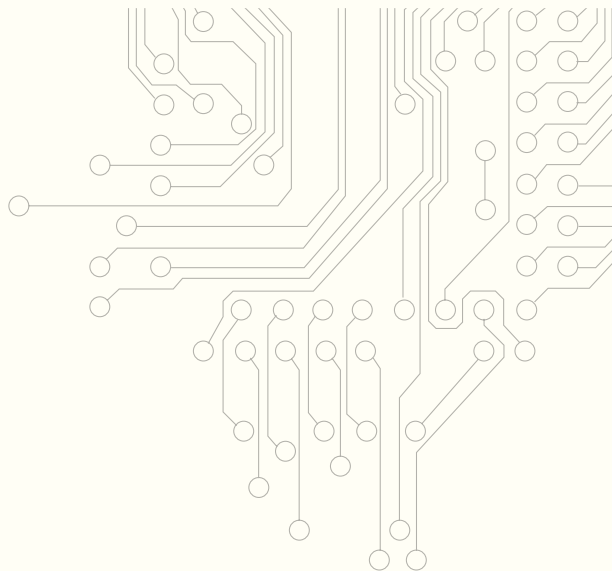


GlobalSoilMap.net



A Global Project

Knowledge of the world's soil resources is fragmented and dated. There is a need for accurate, up-to-date, and spatially referenced soil information as frequently demanded by many stakeholders, including policymakers, the climate change community, farmers, other land users, and scientists. This need coincides with an enormous leap in technologies that allows for accurate collection and prediction of soil properties for pressing issues such as food security, climate change, water scarcity, biodiversity conservation, and urban sprawl.

A global consortium of scientists is collaborating to make a new digital soil map of the world using state-of-the-art and emerging technologies. This initiative, which will map most of the ice-free land surface of the globe over the next five years, will provide a soil information system consisting of the primary functional soil properties at a grid resolution of 90 by 90 meters. This information will be supplemented by interpretation and functionality options that will assist in improved governance and better decision making on a range of global issues. *GlobalSoilMap.net* will be freely available, web-accessible, and widely distributed and used.

In November 2008, an \$18 million grant was obtained from the Bill and Melinda Gates foundation and the Alliance for a Green Revolution in Africa (AGRA) to map most of sub-Saharan Africa. Work has already begun on sampling and analyzing soil across the region.

Global Cooperation for *GlobalSoilMap.net*

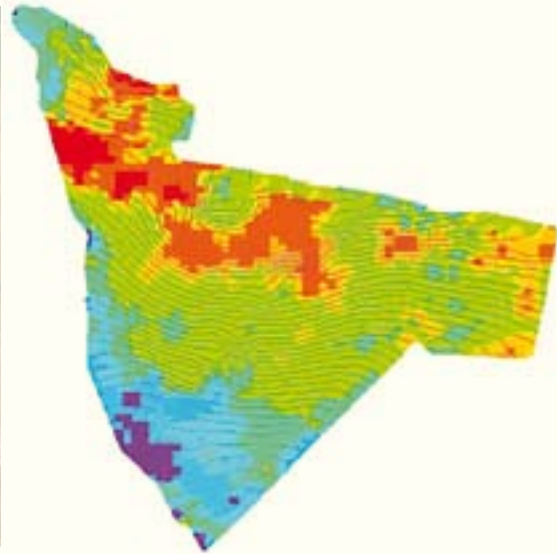
Creating *GlobalSoilMap.net* requires cooperation among scientists around the world. The project is designed around nodes in every continent to allow for the exchange of information and dissemination of data.

These nodes, which are centers of excellence in soil information and agricultural development, offer a unique approach. First, *GlobalSoilMap.net* will foster the south-to-south and north-to-south technology exchange and testing that is only feasible by using a global approach. For example, the technical skills for digital soil mapping in North America, Australia or Europe may greatly enhance the success of mapping in Africa or South Asia. Moreover, working through the consortium will avoid the piecemeal approach that results in incompatible outputs across the world. With *GlobalSoilMap.net*, data will be presented in a cohesive format, allowing for comparison and analysis between and among continents.



Nodes that lead *GlobalSoilMap.net*

- Sub-Saharan Africa: Tropical Soil Biology and Fertility Institute (TSBF-CIAT), Kenya and Tropical Agriculture Program and CIESIN, the Earth Institute (EI) at Columbia University, USA.
 - North America: Geospatial Development Center, Natural Resources Conservation Service (NRCS), US Department of Agriculture, USA.
 - Latin America and the Caribbean: Brazilian Agricultural Research Corporation (EMBRAPA), Brazil.
 - Europe and Eurasia: Joint Research Centre, European Commission, Italy
 - Oceania: Commonwealth Scientific and Industrial Research Organization (CSIRO), University of Sydney, Australia
 - East Asia: Institute of Soil Science, Chinese Academy of Sciences, PR of China.
 - Nodes in North Africa, West Asia and South Asia are pending.
- ISRIC – World Soil Information in the Netherlands is the global coordinator of this initiative.



Contacts

General coordination

Alfred Hartemink
ISRIC - World Soil Information
PO Box 353, 6700 AJ Wageningen
The Netherlands
alfred.hartemink@wur.nl

Alex McBratney
Faculty of Agriculture, Food & Natural Resources
The University of Sydney
NSW 2006
Australia
Alex.McBratney@usyd.edu.au

Pedro Sanchez
The Earth Institute at Columbia University
2G Lamont Hall
61 Route 9W - PO Box 1000
Palisades, NY, 10964-8000
USA
sanchez@iri.columbia.edu

North America

Jon Hempel
NRCS National Geospatial
Development Center
157 Clark Hall Annex, P.O. Box 6301
Morgantown, WV 26505
USA
jon.hempel@wv.usda.gov

Latin America

Maria de Lourdes Mendonça Santos
Embrapa, National Center
of Soil Research
Rua Jardim Botânico, 1024, CEP 22.460-000
Rio de Janeiro
Brazil
loumendonca@cnpq.embrapa.br

Oceania

Neil McKenzie
CSIRO Land & Water
GPO Box 1666, Canberra, ACT, 2601
Australia
neil.mckenzie@csiro.au

Europe

Luca Montanarella
European Commission - DG JRC
Via E. Fermi, 2749
I-21027 Ispra (VA)
Italy
luca.montanarella@jrc.it

Africa

Pedro Sanchez / N. Sanginga
Tropical Soil Biology and Fertility Institute
(CIAT-TSBF)
ICRAF Complex, UN Avenue, Gigiri, Nairobi
P.O. Box 30677-00100
Nairobi, Kenya
n.sanginga@cgiar.org

East Asia

Gan-Lin Zhang
Institute of Soil Science,
Chinese Academy of Sciences
71 Beijingdonglu, Nanjing 210008
China
glzhang@issas.ac.cn

The *GlobalSoilMap.net* project aims to make a new digital soil map of the world using state-of-the-art and emerging technologies for soil mapping and predicting soil properties at fine resolution. This new global soil map will be supplemented by interpretation and functionality options that aim to assist better decisions in a range of global issues such as food production and hunger eradication, climate change, and environmental degradation. It is an initiative of the Digital Soil Mapping Working Group of the International Union of Soil Sciences (IUSS) and is led by academic and research centres in all continents.

www.globalsoilmap.net

